

## Recorded Steps

---

This file contains all the steps and information that was recorded to help you describe the recorded steps to others. Before sharing this file, you should verify the following:

- The steps below accurately describe the recording.
- There is no information below or on any screenshots that you do not want others to see.

Passwords or any other text you typed were not recorded, except for function and shortcut keys that you used.

You can do the following:

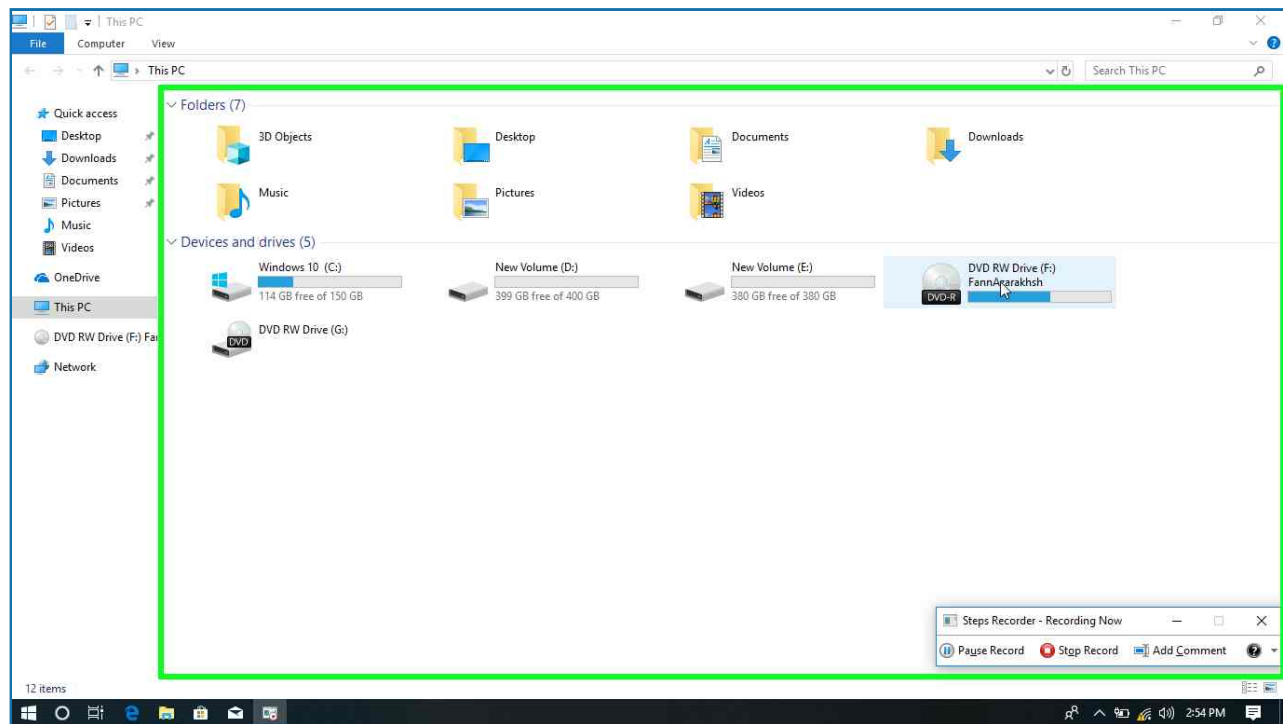
- [Review the recorded steps](#)
  - [Review the recorded steps as a slide show](#)
  - [Review the additional details](#)
- 

## Steps

---

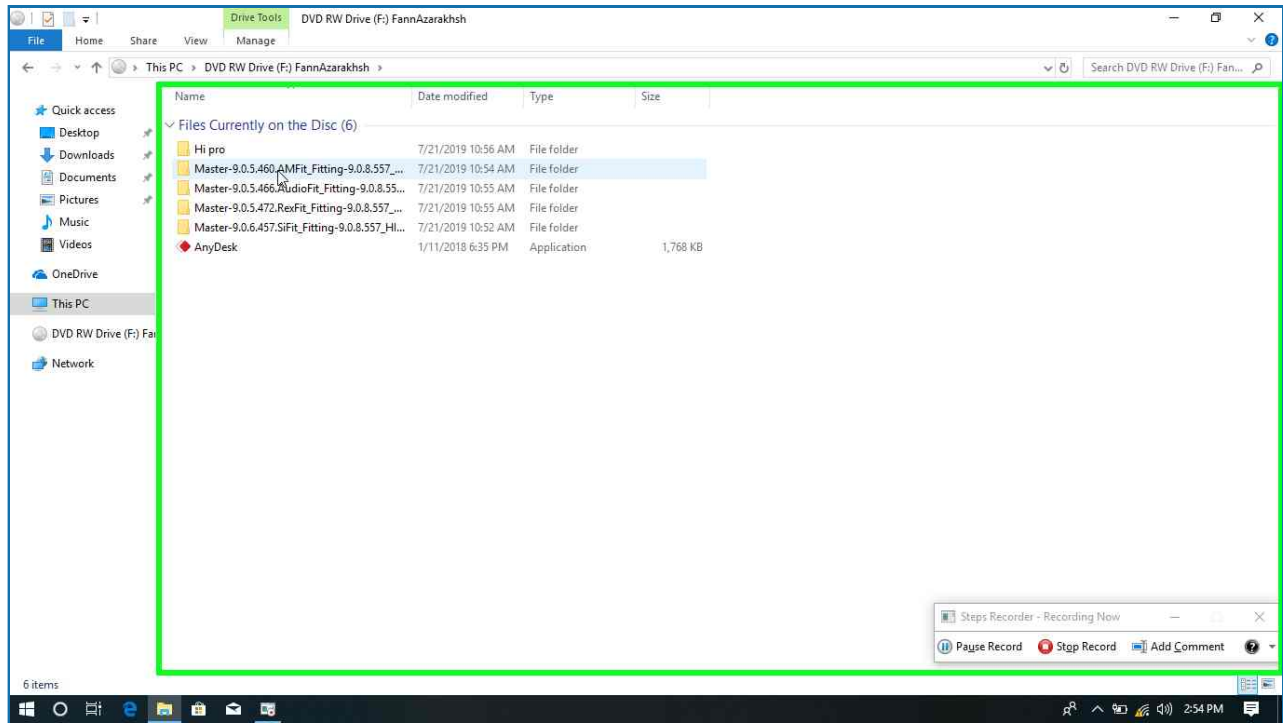
[Next](#)

**Step 1: (7/29/2019 2:54:22 PM)** User left double click on "Name (edit)" in "Thi"



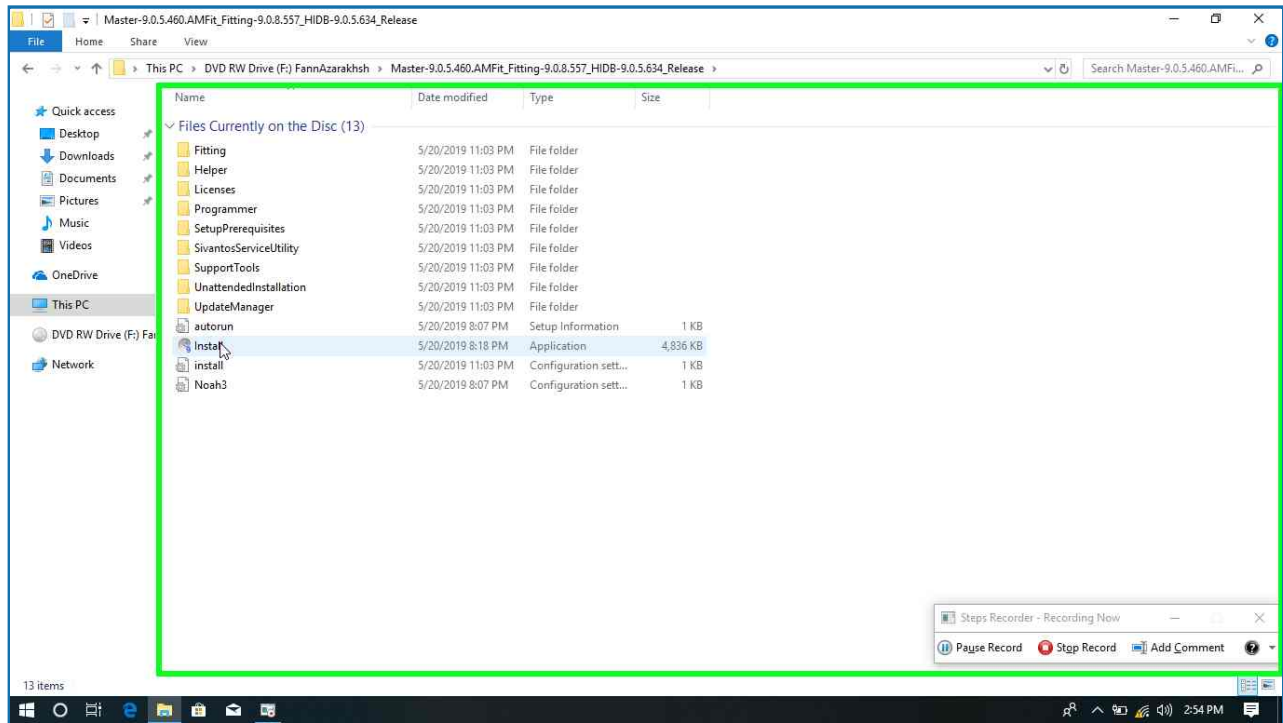
[Previous](#) [Next](#)

**Step 2: (7/29/2019 2:54:24 PM)** User left double click on "Name (edit)" in "DVD"



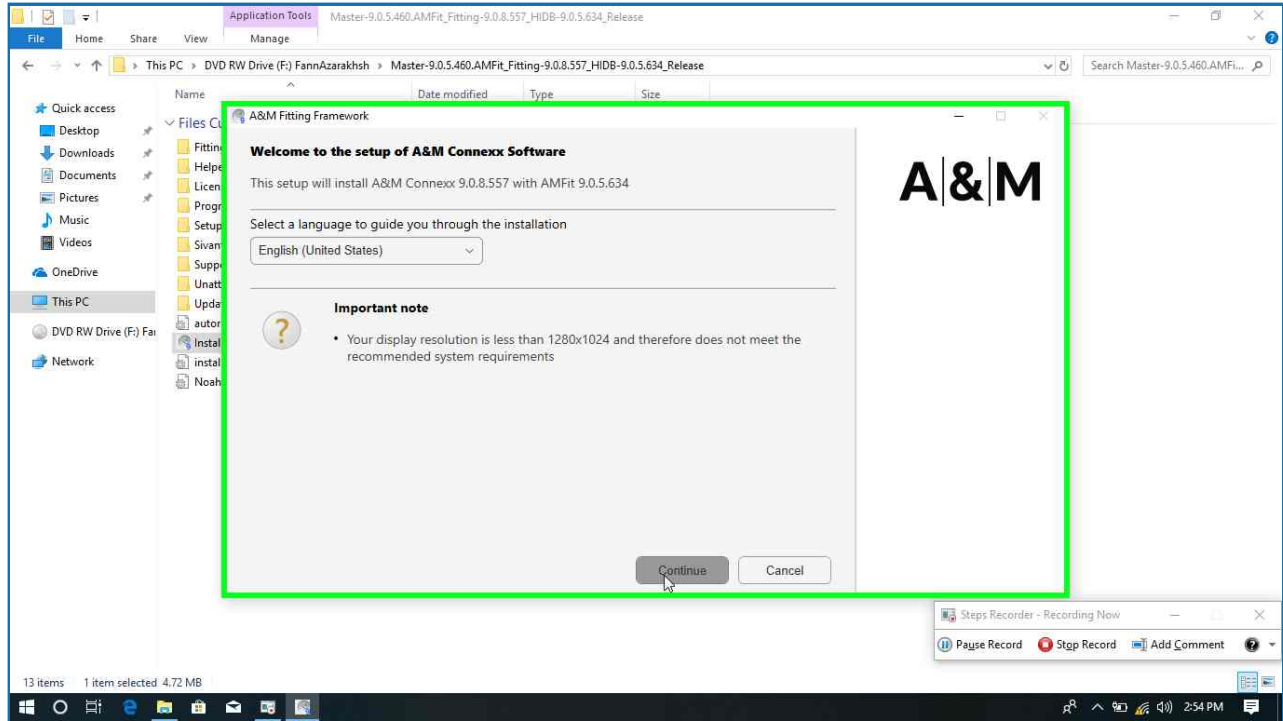
[Previous](#) [Next](#)

Step 3: (7/29/2019 2:54:26 PM) User left double click on "Name (edit)" in "Mas"



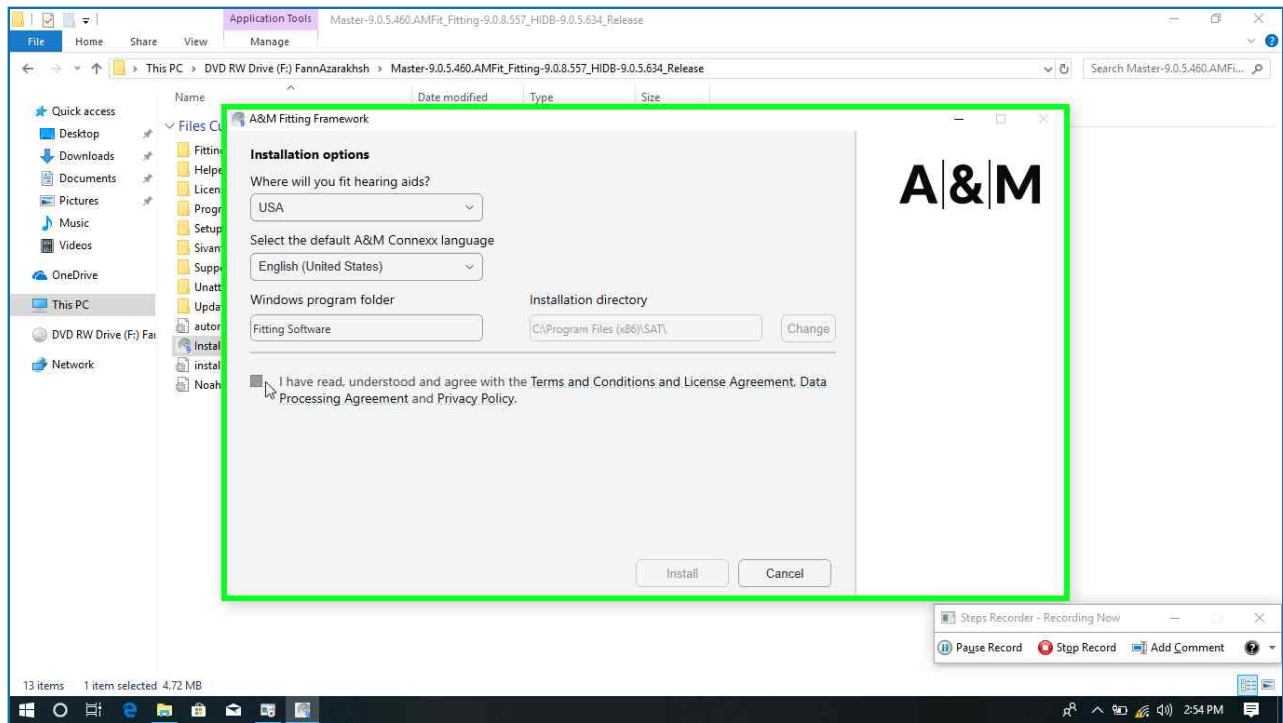
[Previous](#) [Next](#)

Step 4: (7/29/2019 2:54:36 PM) User left click on "Continue (text)" in "A&M"

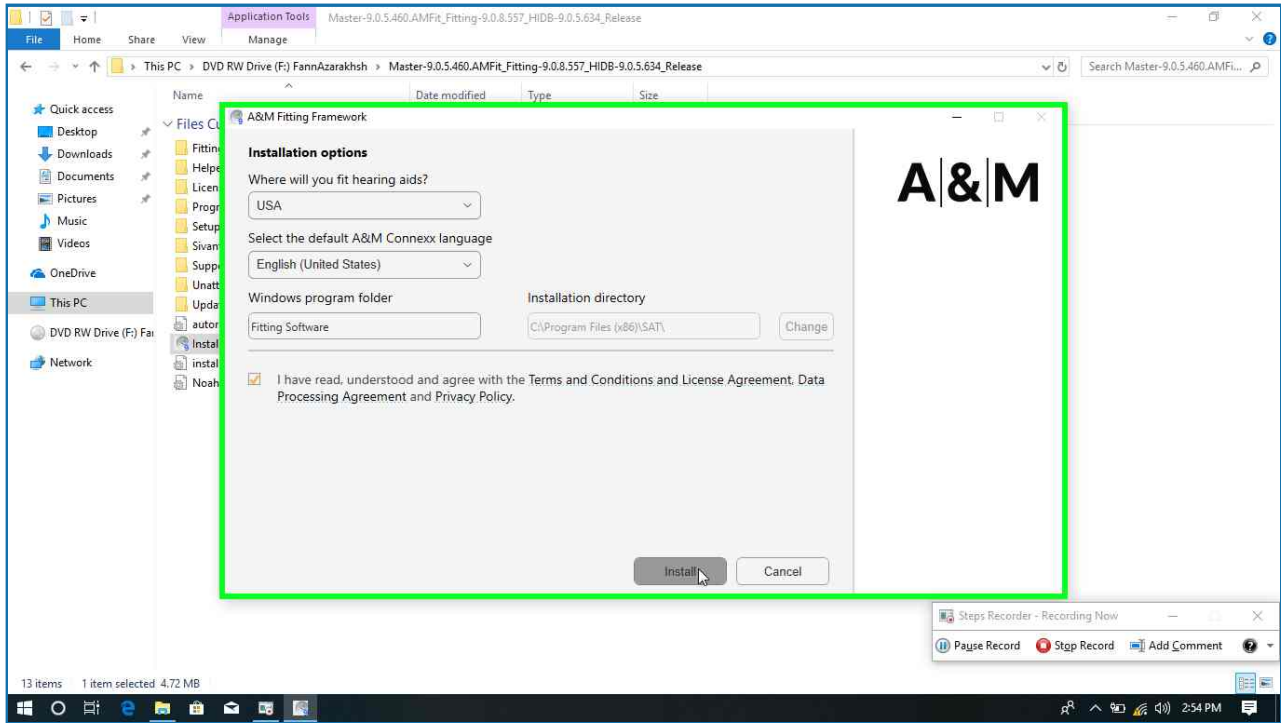


[Previous](#) [Next](#)

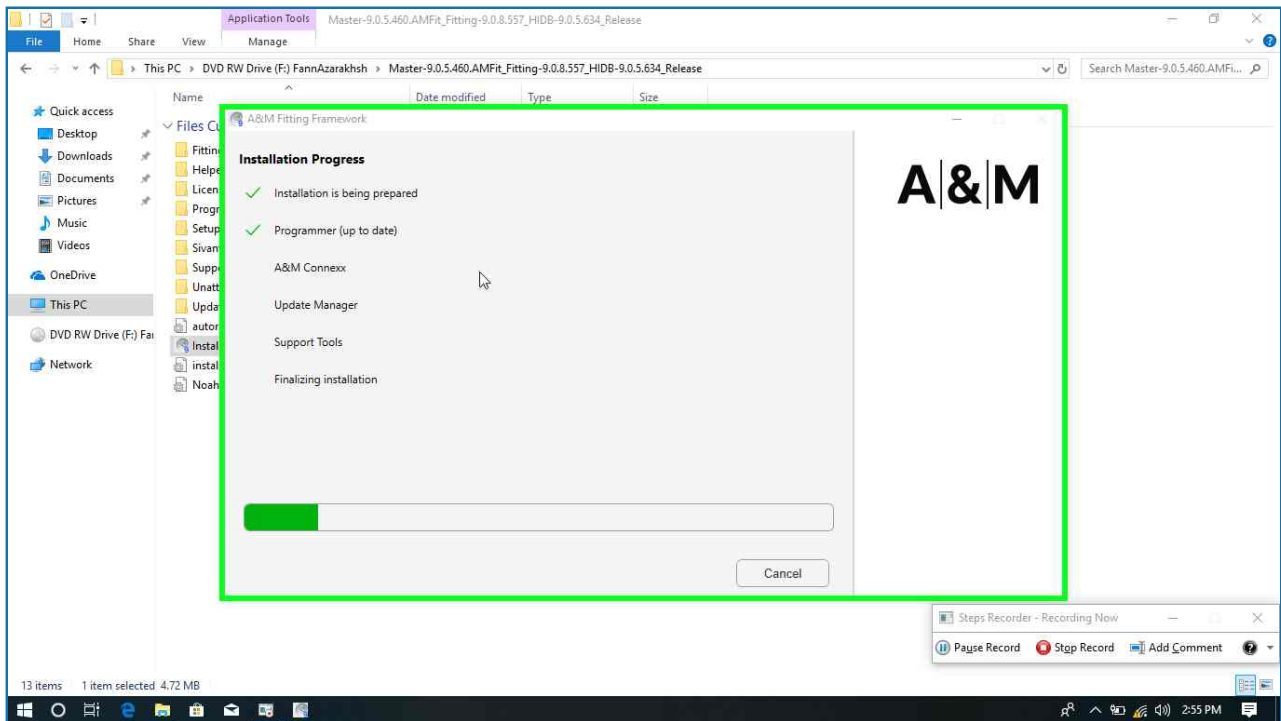
Step 5: (7/29/2019 2:54:37 PM) User left click on "A&M Fitting Framework (window)" in "A&M"



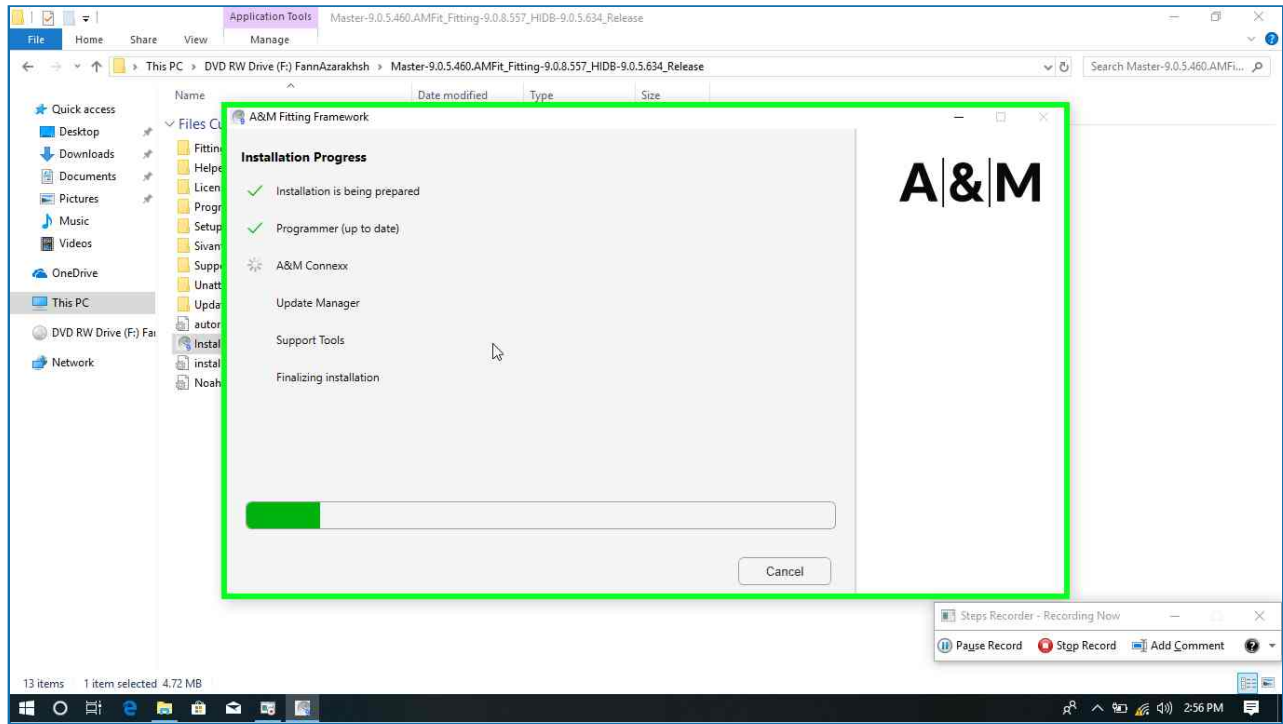
**Step 6: (7/29/2019 2:54:41 PM)** User left click on "Install (button)" in "A&M"



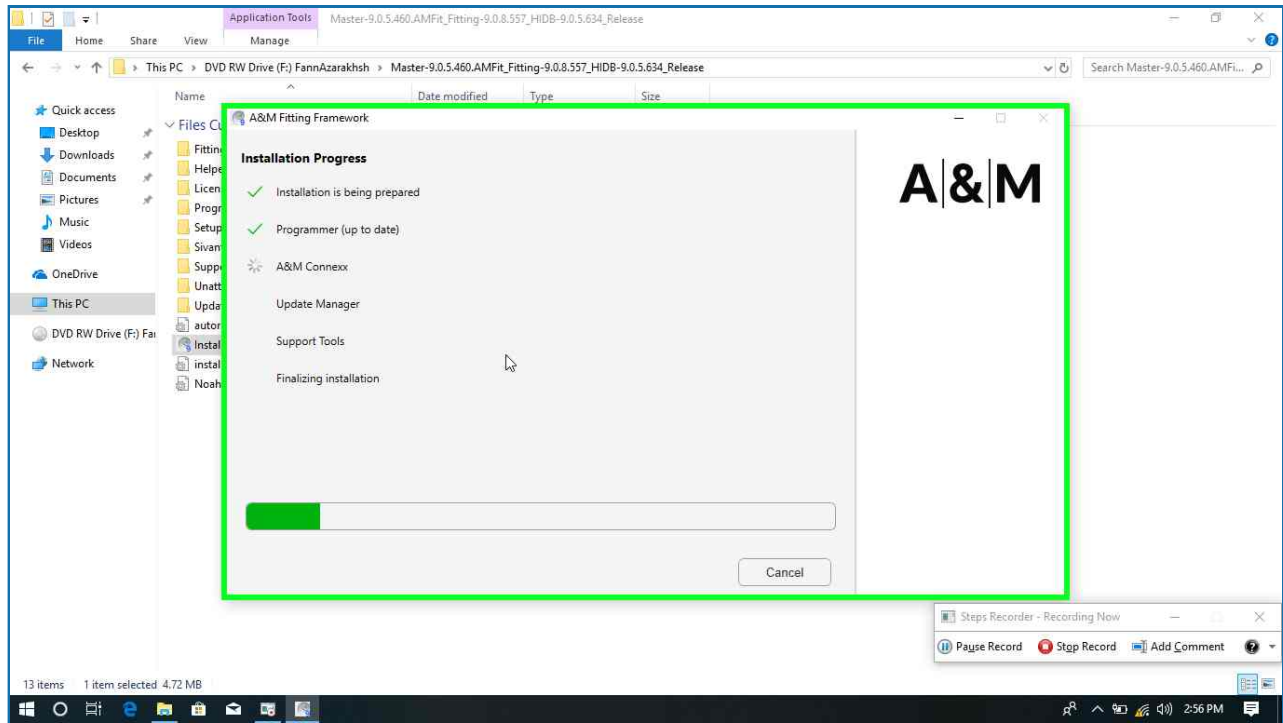
**Step 7: (7/29/2019 2:55:05 PM)** User left click on "SHS.SAT.Bootstrapper.CustomBA.Models.InstallationProgressModel (list item)" in "A&M"



**Step 8: (7/29/2019 2:56:24 PM)** User left click on "SHS.SAT.Bootstrapper.CustomBA.Models.InstallationProgressModel (list item)" in "A&M"

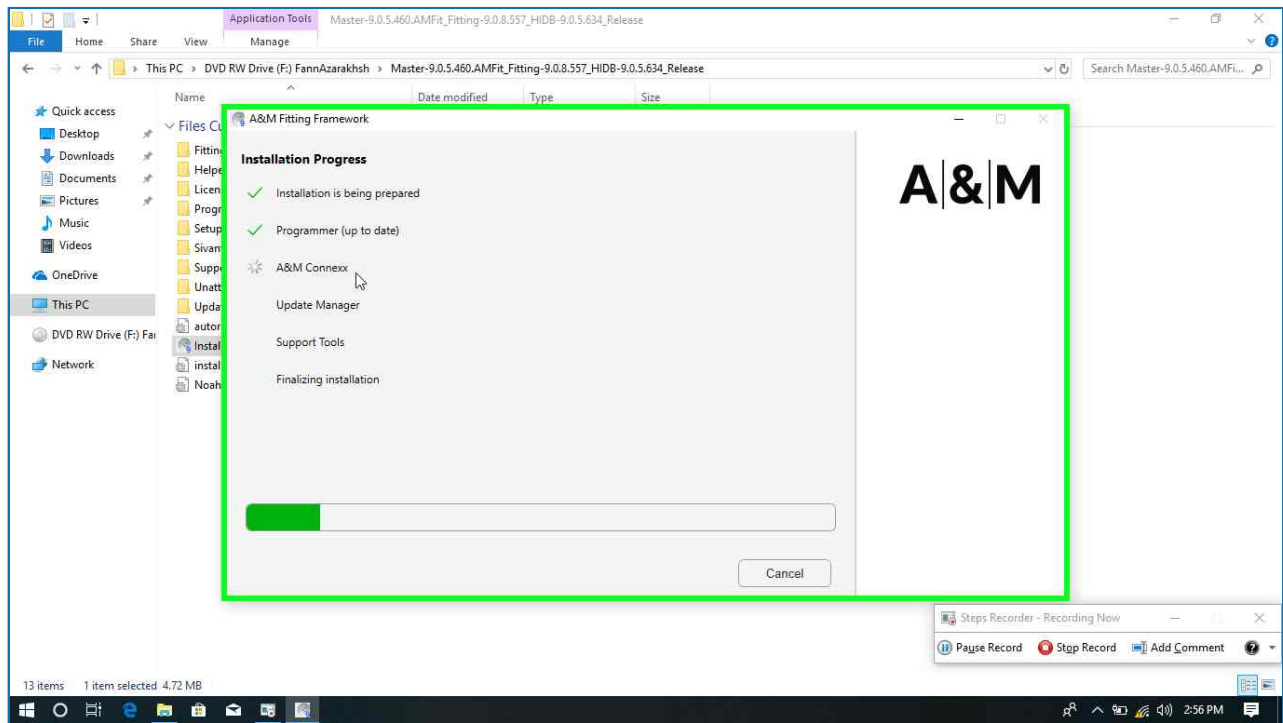


**Step 9: (7/29/2019 2:56:31 PM)** User left click on "SHS.SAT.Bootstrapper.CustomBA.Models.InstallationProgressModel (list item)" in "A&M"

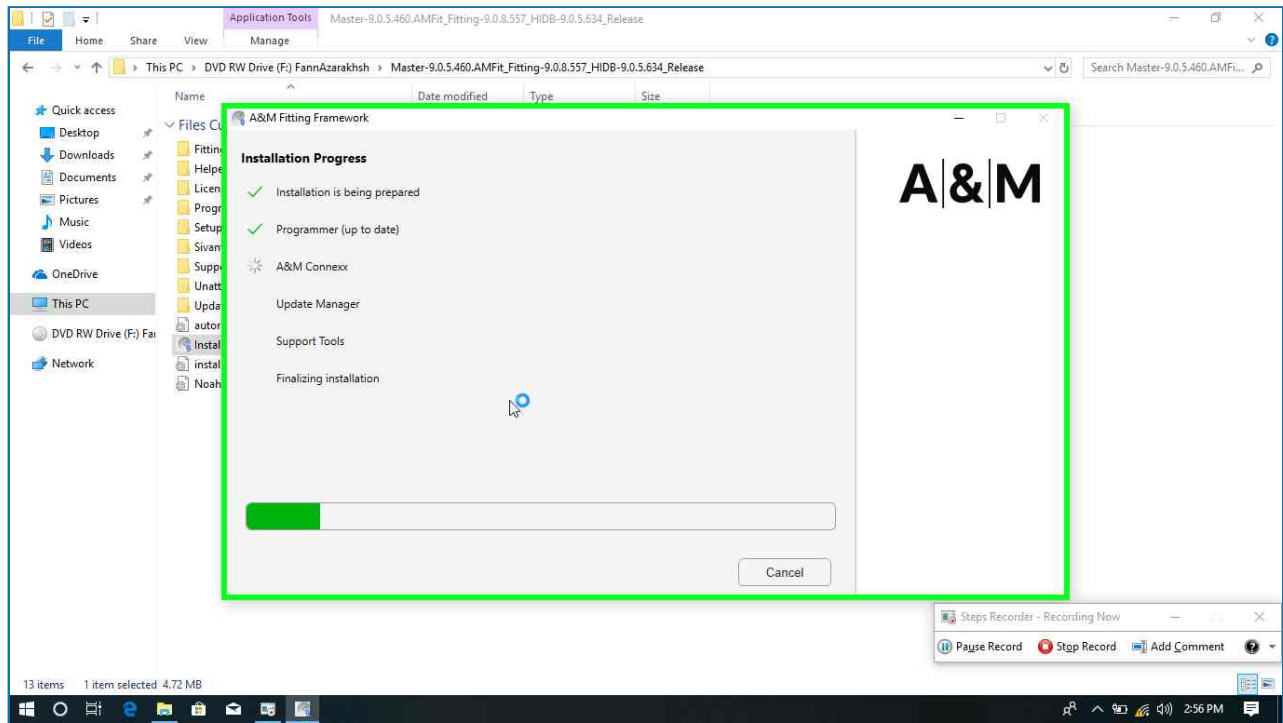


[Previous](#) [Next](#)

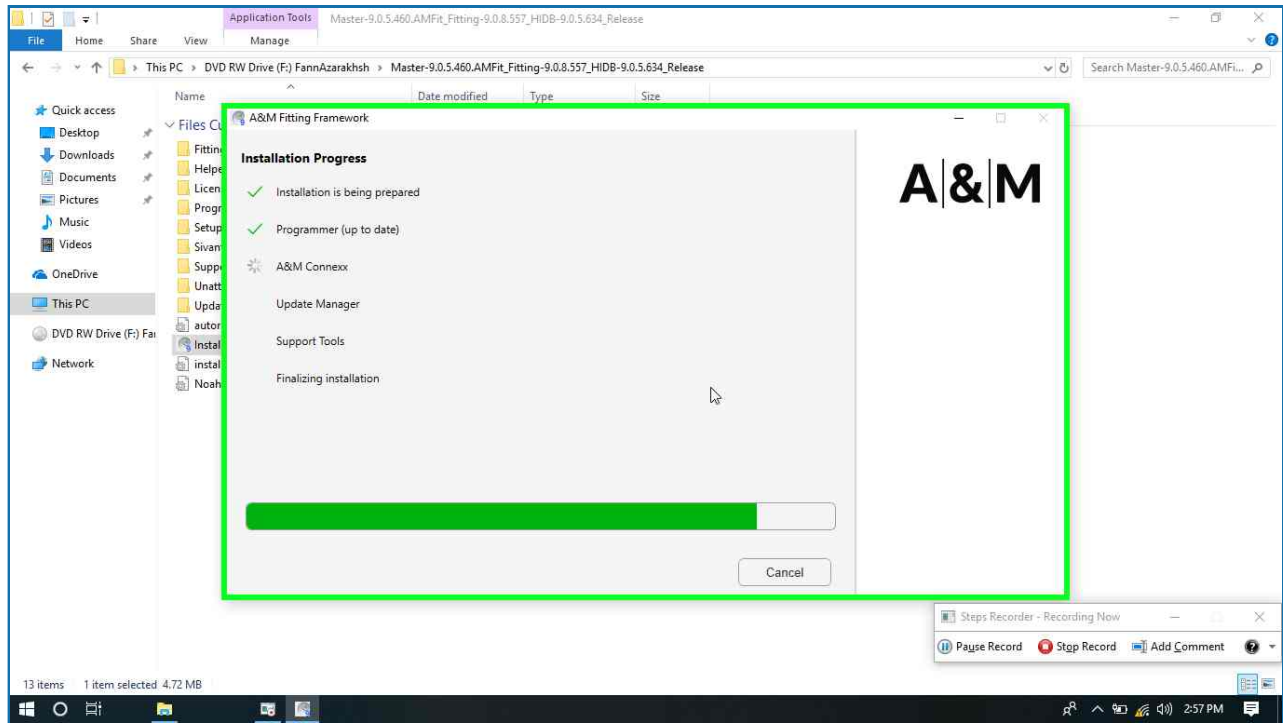
**Step 10: (7/29/2019 2:56:40 PM)** User left click on "SHS.SAT.Bootstrapper.CustomBA.Models.InstallationProgressModel (list item)" in "A&M"



**Step 11: (7/29/2019 2:56:43 PM)** User left click on "SHS.SAT.Bootstrapper.CustomBA.Models.InstallationProgressModel (list item)" in "A&M"

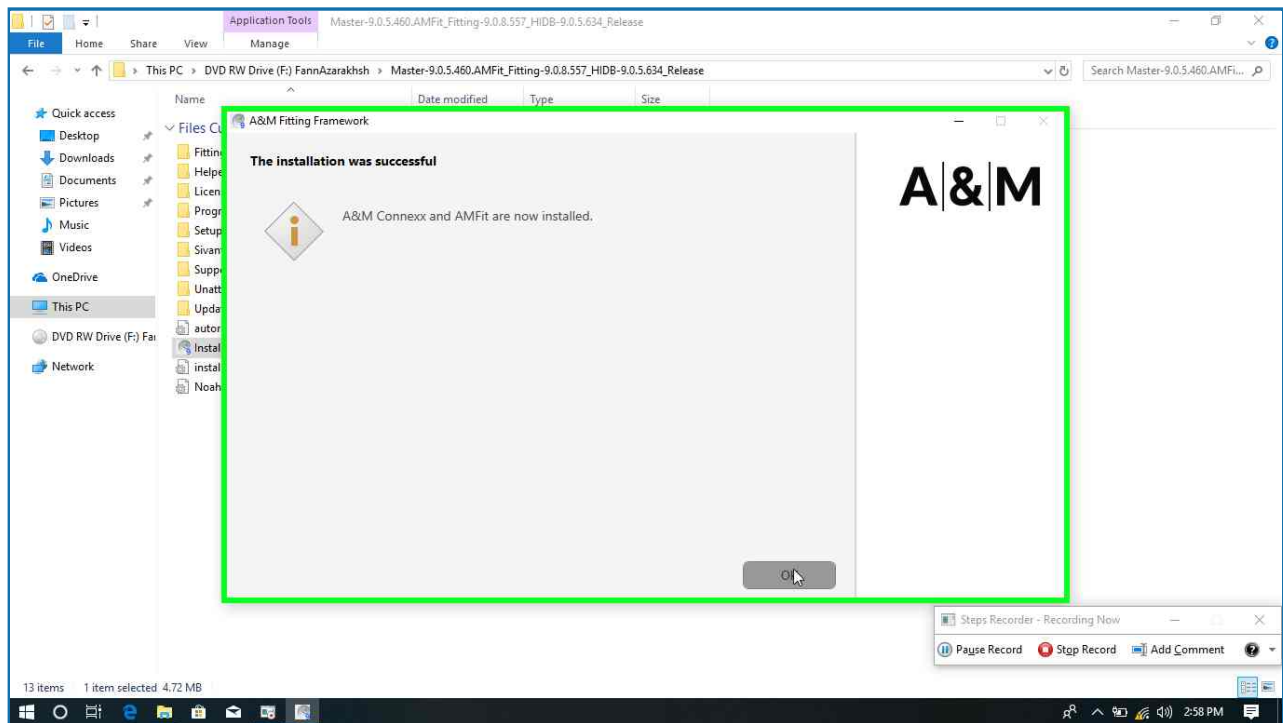


**Step 12: (7/29/2019 2:57:37 PM)** User left click on "SHS.SAT.Bootstrapper.CustomBA.Models.InstallationProgressModel (list item)" in "A&M"



[Previous](#)

**Step 13: (7/29/2019 2:58:58 PM)** User left click on "OK (text)" in "A&M"



[Return to top of page...](#)