

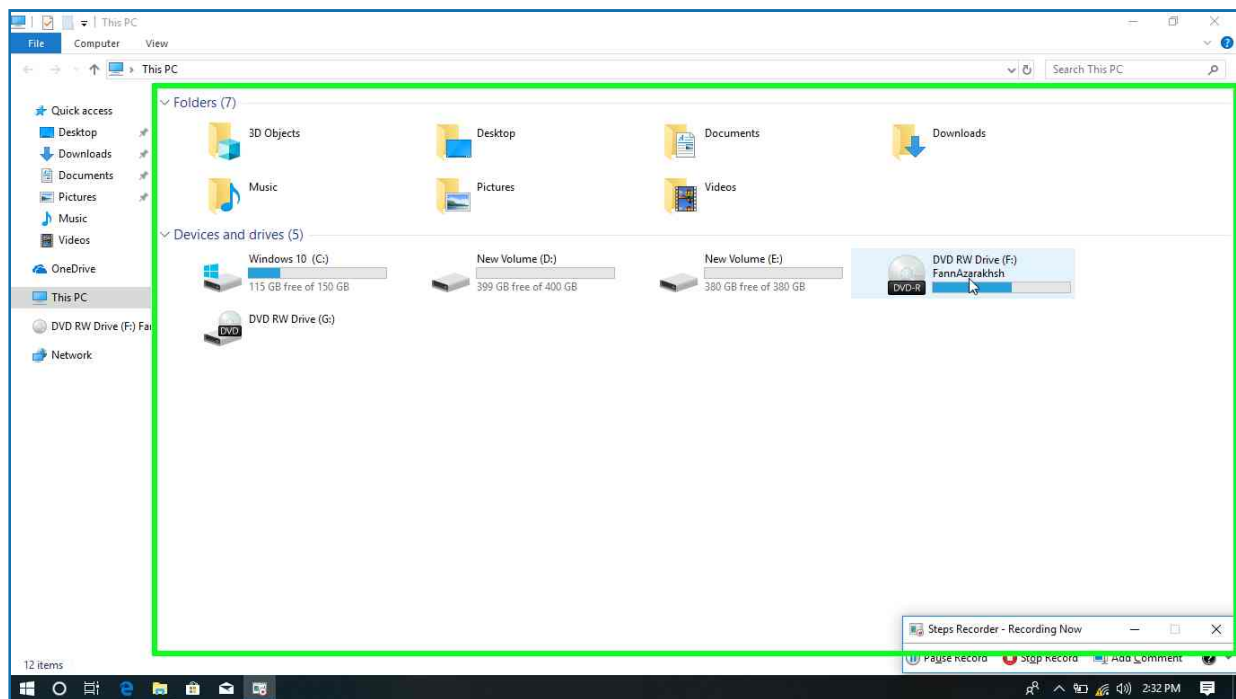
Recorded Steps

- The steps below accurately describe the recording.
 - Review the recorded steps
 - Review the recorded steps as a slide show
 - Review the additional details
-

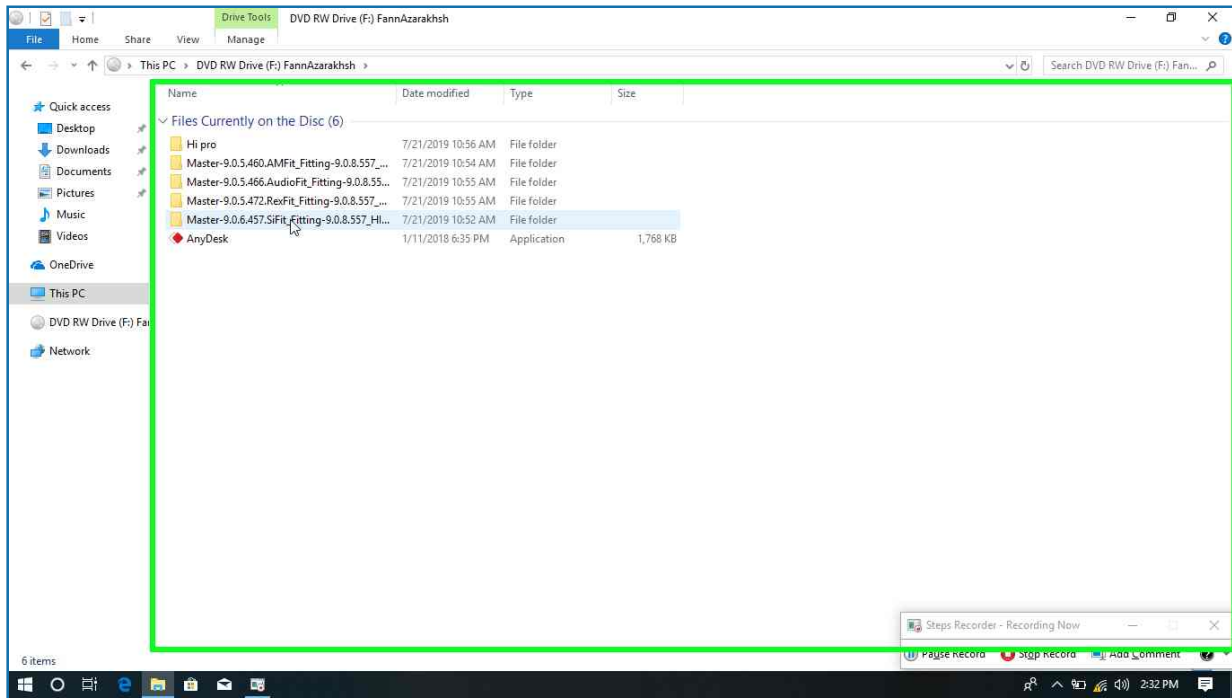
Steps

[Next](#)

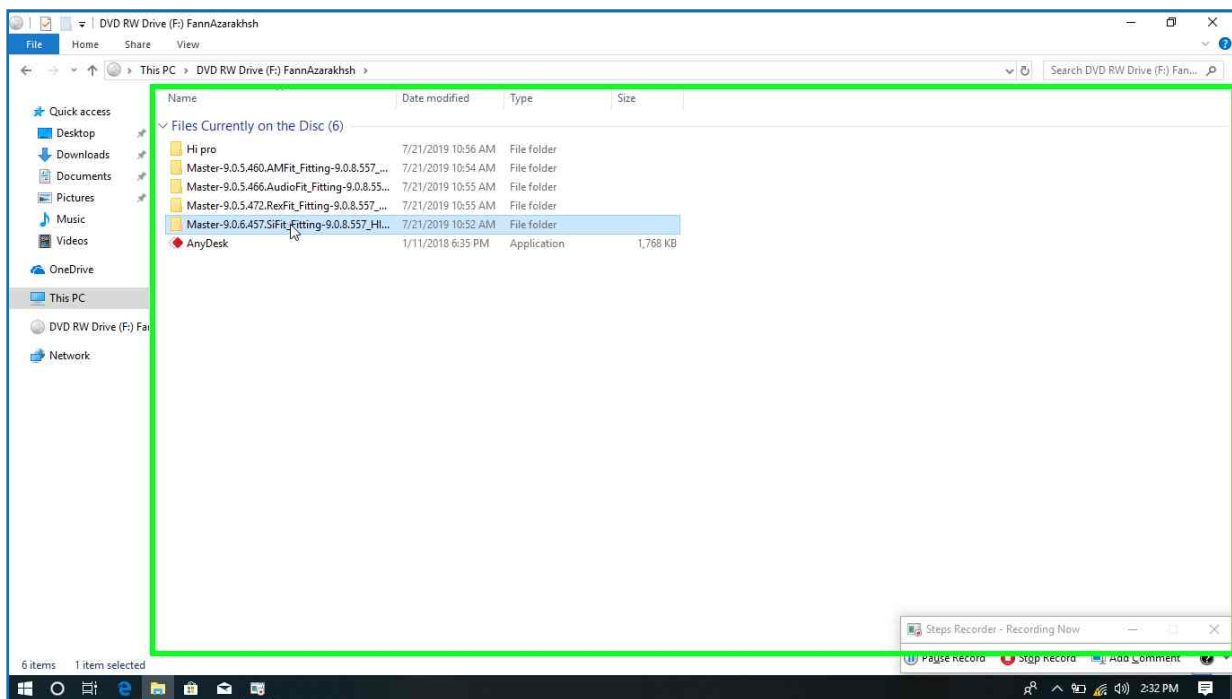
Step 1: (7/29/2019 2:32:12 PM) User left double click on "Name (edit)" in "Thi"

[Previous](#) [Next](#)

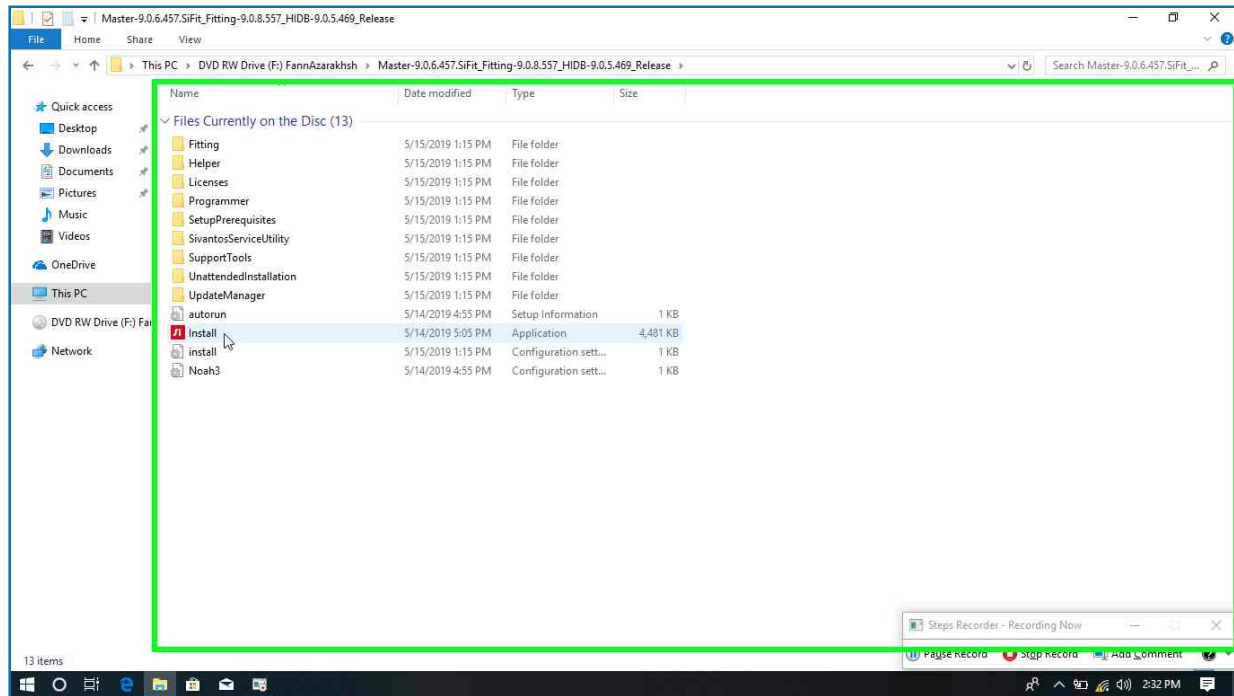
Step 2: (7/29/2019 2:32:19 PM) User left click on "Name (edit)" in "DVD"

[Previous](#) [Next](#)

Step 3: (7/29/2019 2:32:20 PM) User left double click on "Name (edit)" in "DVD"

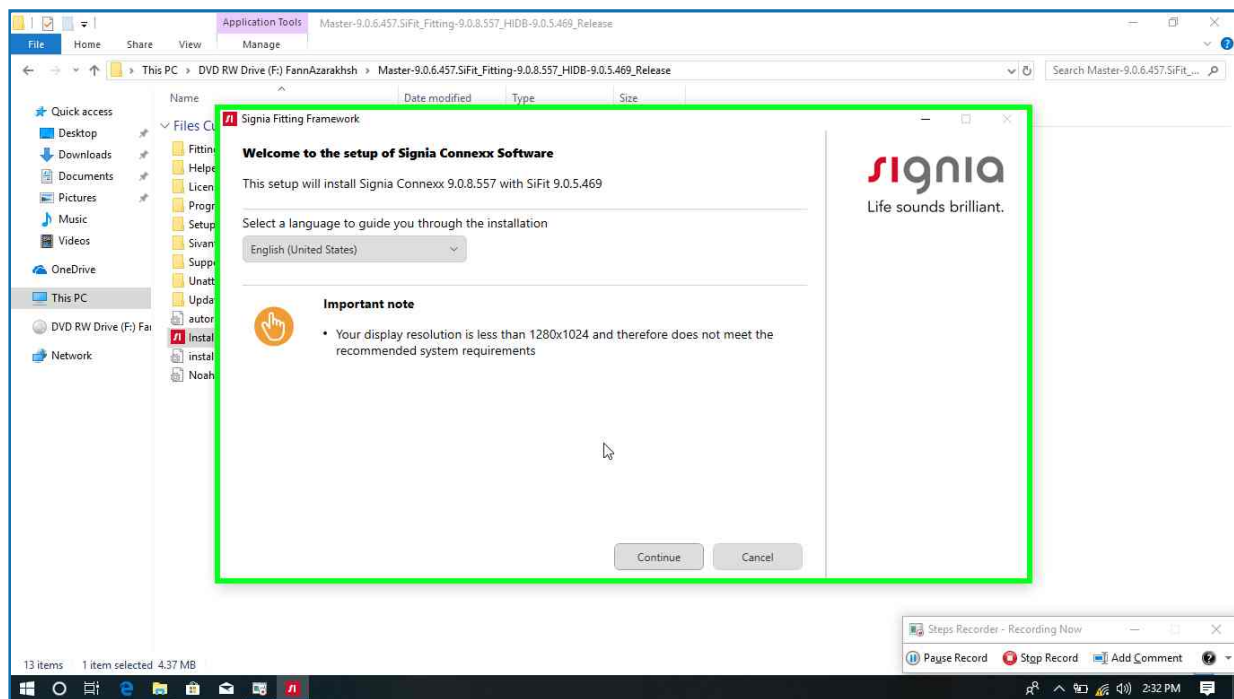
[Previous](#) [Next](#)

Step 4: (7/29/2019 2:32:23 PM) User left double click on "Name (edit)" in "Mas"



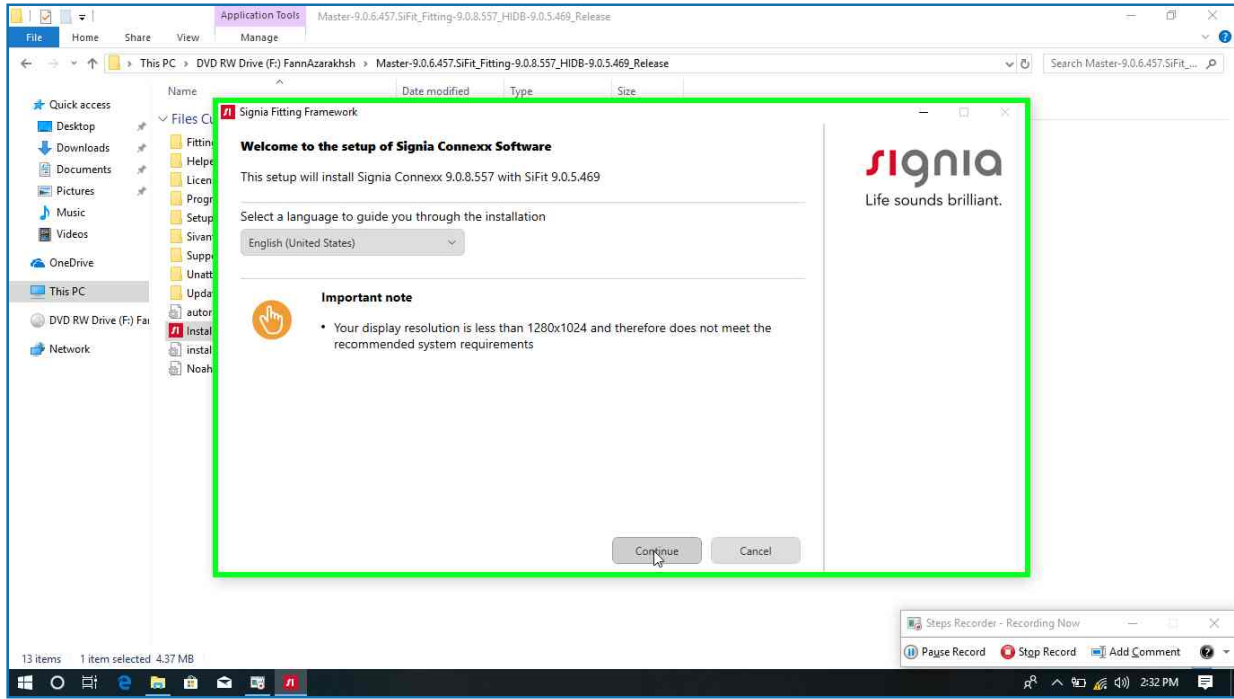
[Previous](#) [Next](#)

Step 5: (7/29/2019 2:32:39 PM) User left click on "Signia Fitting Framework (window)" in "Sig"



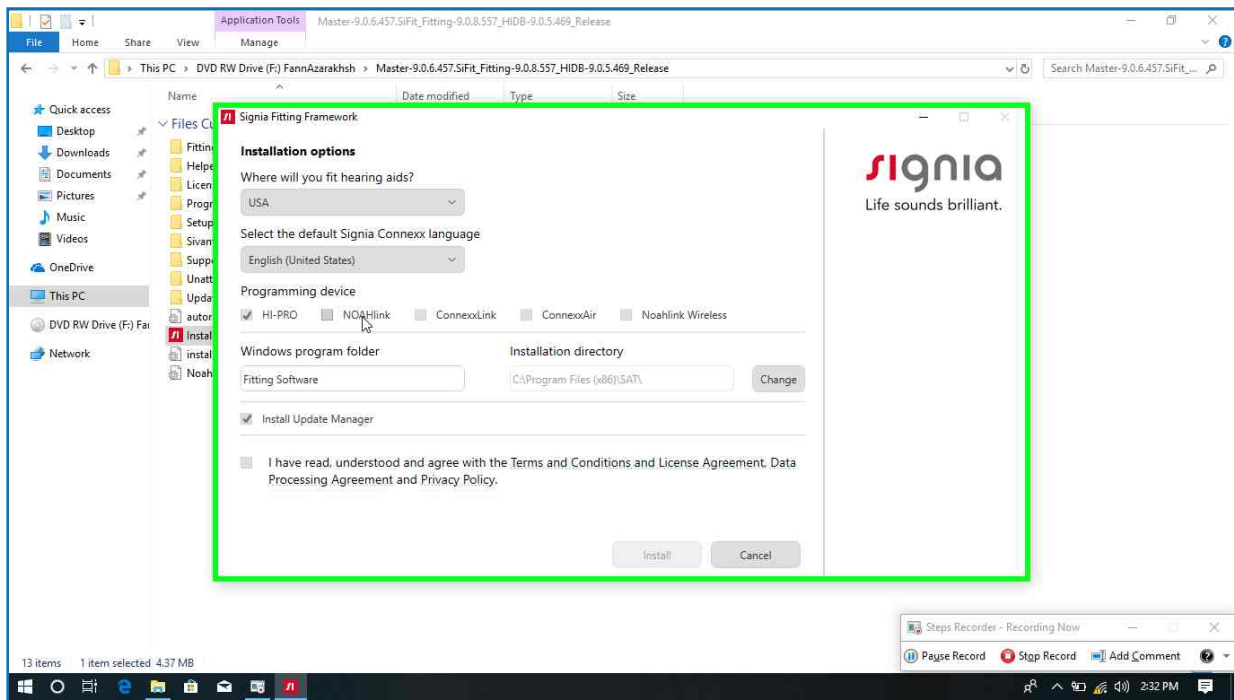
[Previous](#) [Next](#)

Step 6: (7/29/2019 2:32:40 PM) User left click on "Continue (text)" in "Sig"



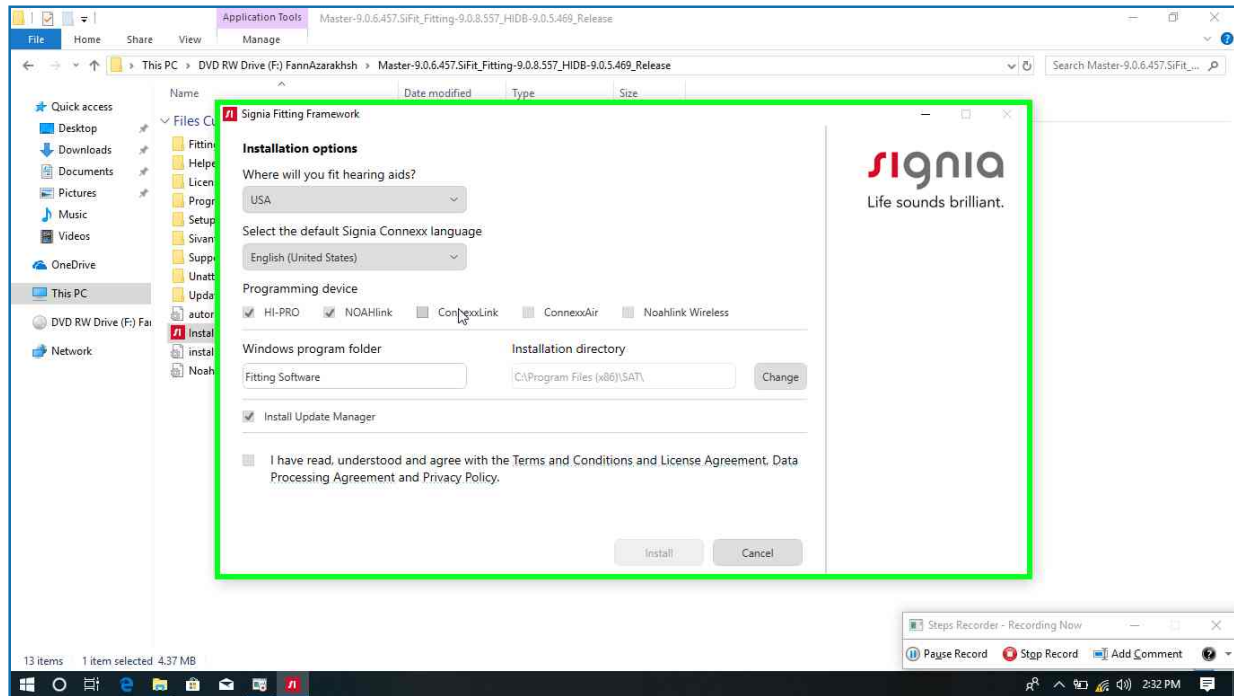
[Previous](#) [Next](#)

Step 7: (7/29/2019 2:32:42 PM) User left click on "NOAHlink (text)" in "Sig"

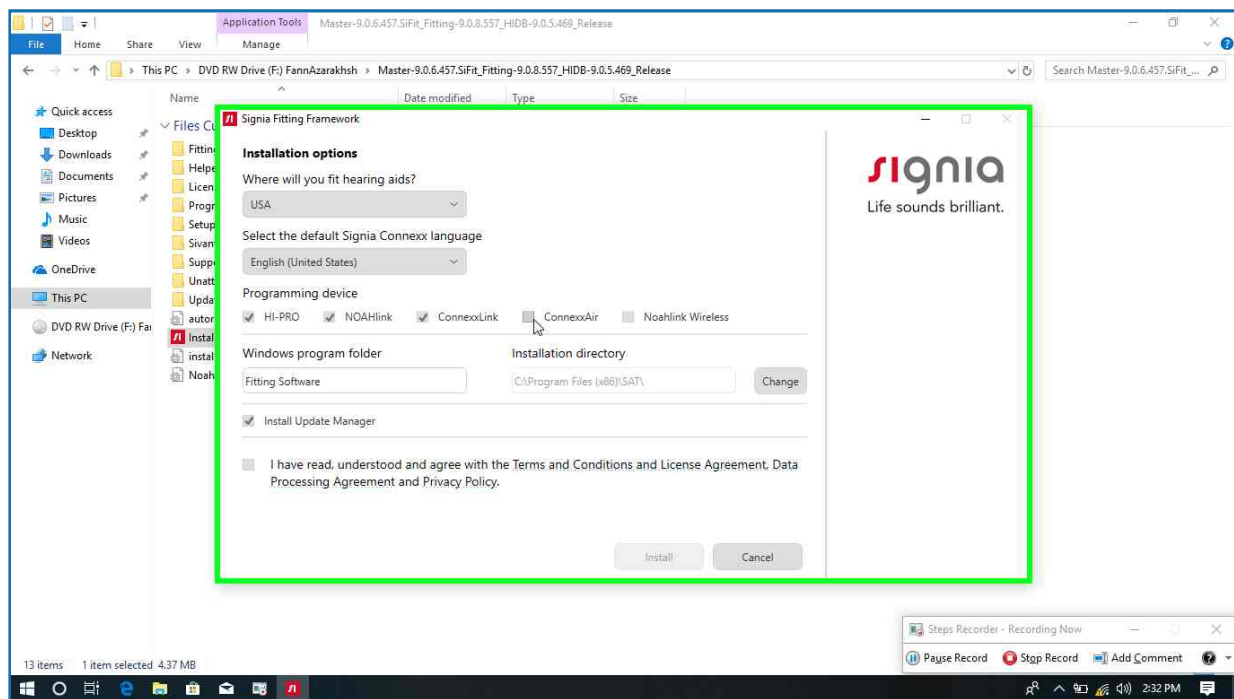


[Previous](#) [Next](#)

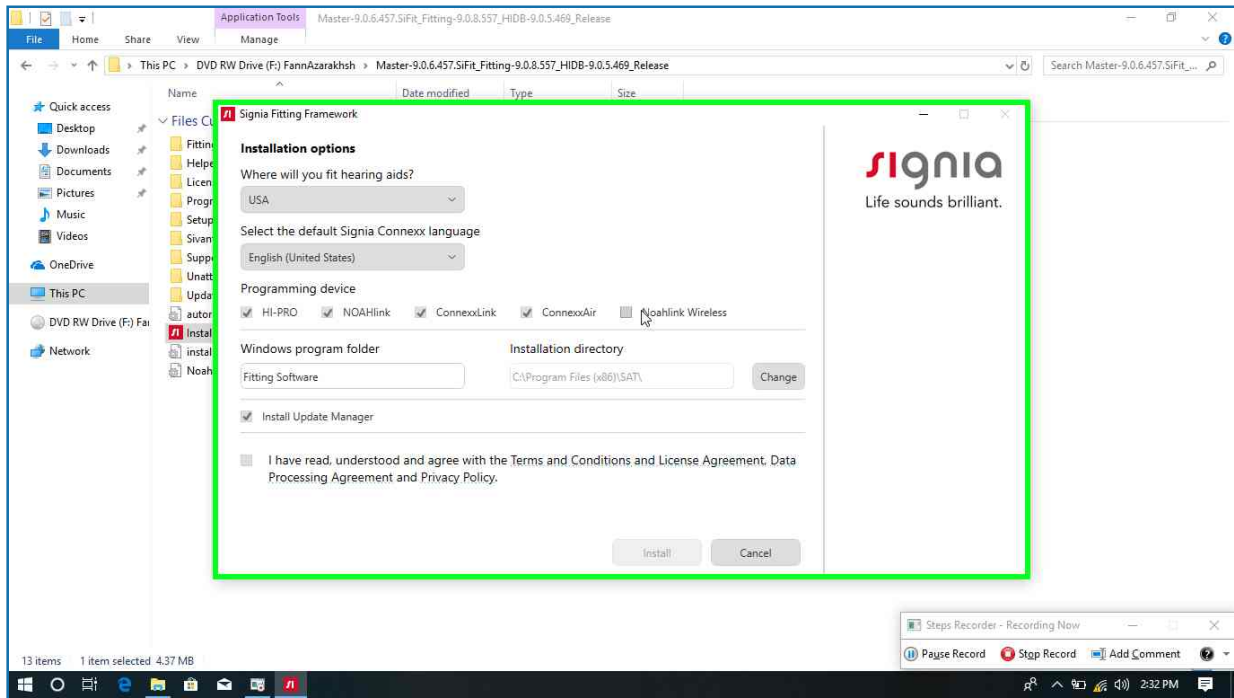
Step 8: (7/29/2019 2:32:43 PM) User left click on "ConnexxLink (text)" in "Sig"

[Previous](#) [Next](#)

Step 9: (7/29/2019 2:32:45 PM) User left click on " (text)" in "Sig"

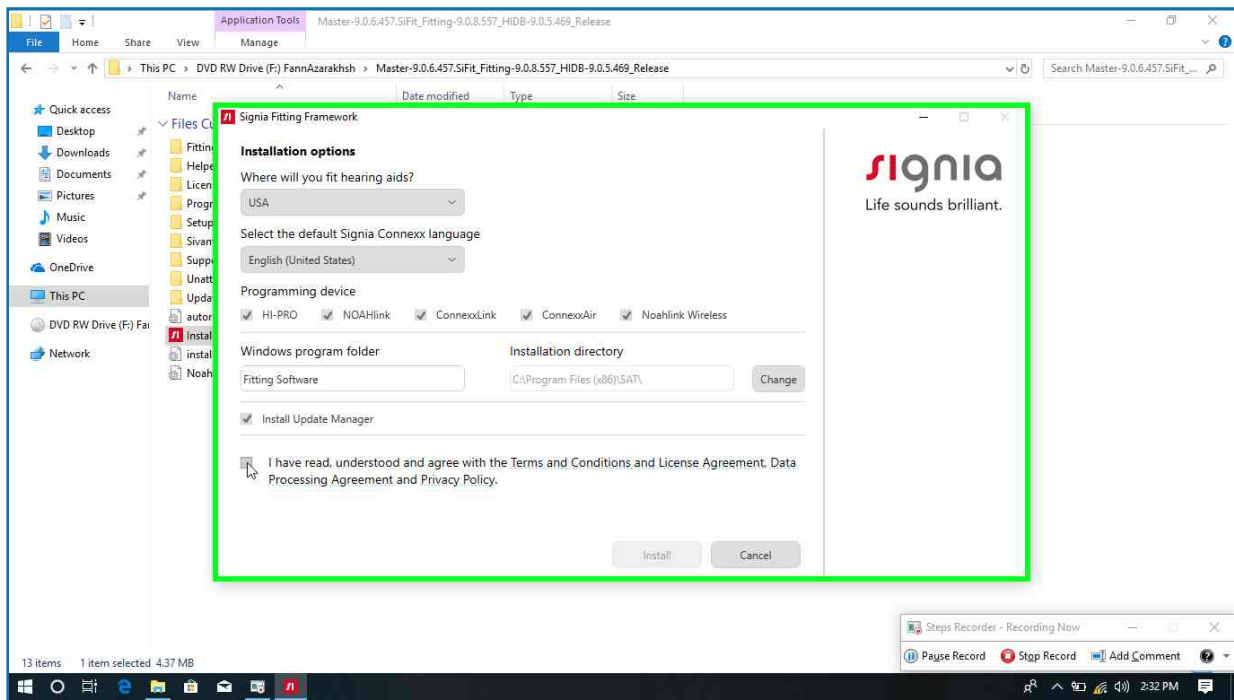
[Previous](#) [Next](#)

Step 10: (7/29/2019 2:32:46 PM) User left click on "Noahlink Wireless (check box)" in "Sig"



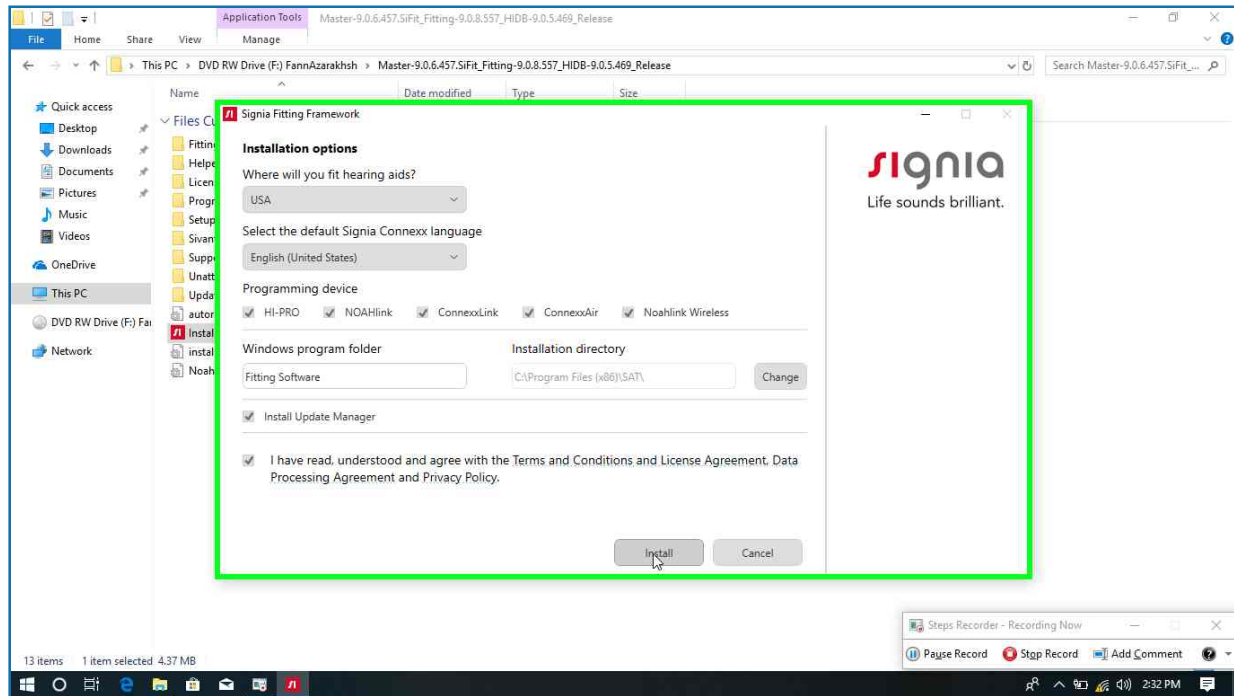
[Previous](#) [Next](#)

Step 11: (7/29/2019 2:32:49 PM) User left click on " (text)" in "Sig"



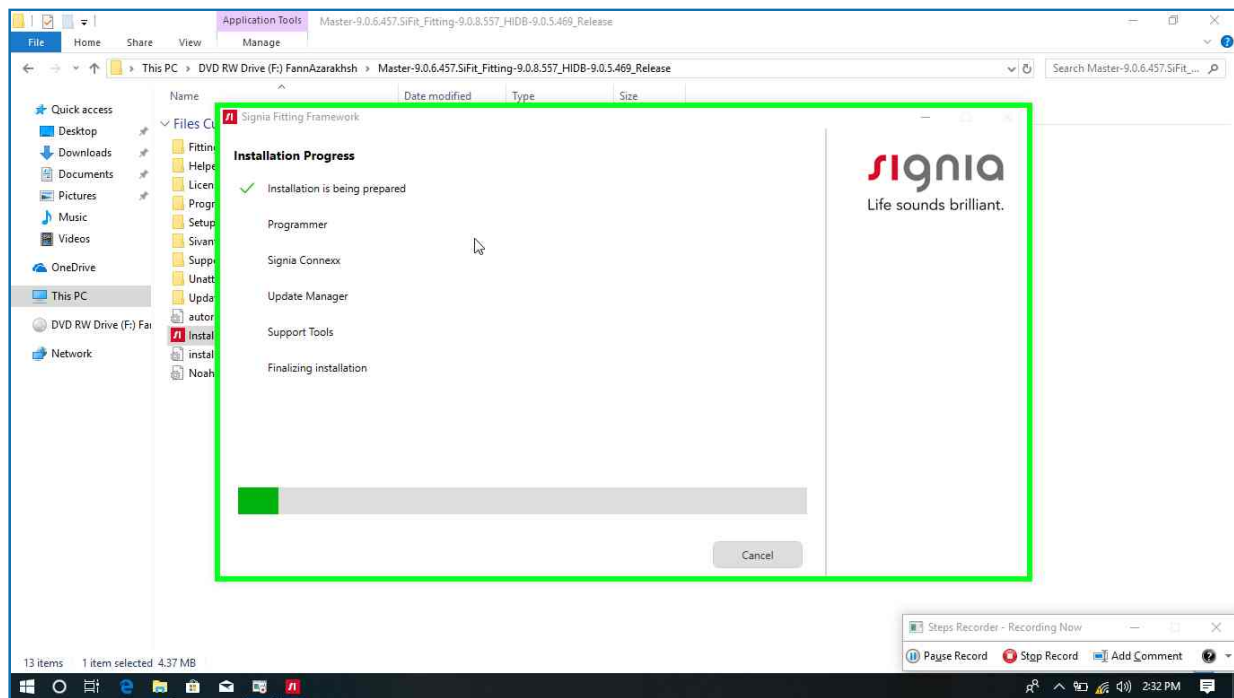
[Previous](#) [Next](#)

Step 12: (7/29/2019 2:32:52 PM) User left click on "Install (text)" in "Sig"



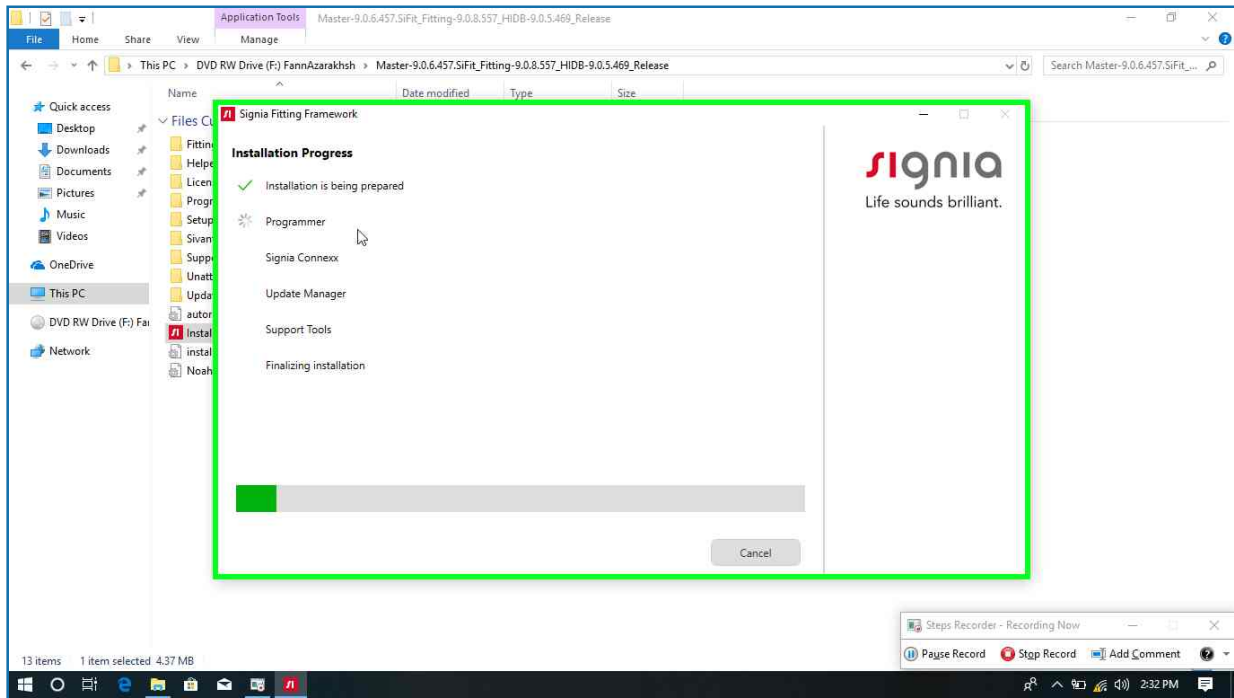
[Previous](#) [Next](#)

Step 13: (7/29/2019 2:32:54 PM) User left click on "SHS.SAT.Bootstrapper.CustomBA.Models.InstallationProgressModel (list item)" in "Sig"



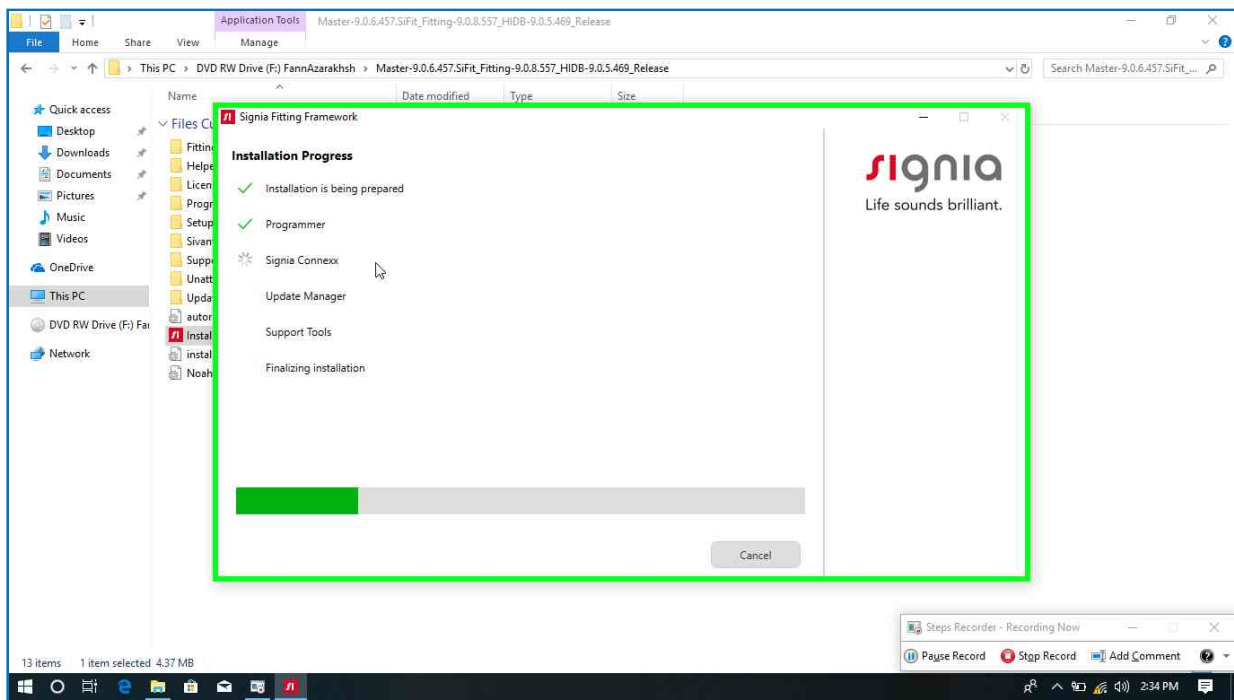
[Previous](#) [Next](#)

Step 14: (7/29/2019 2:32:59 PM) User left click on "SHS.SAT.Bootstrapper.CustomBA.Models.InstallationProgressModel (list item)" in "Sig"



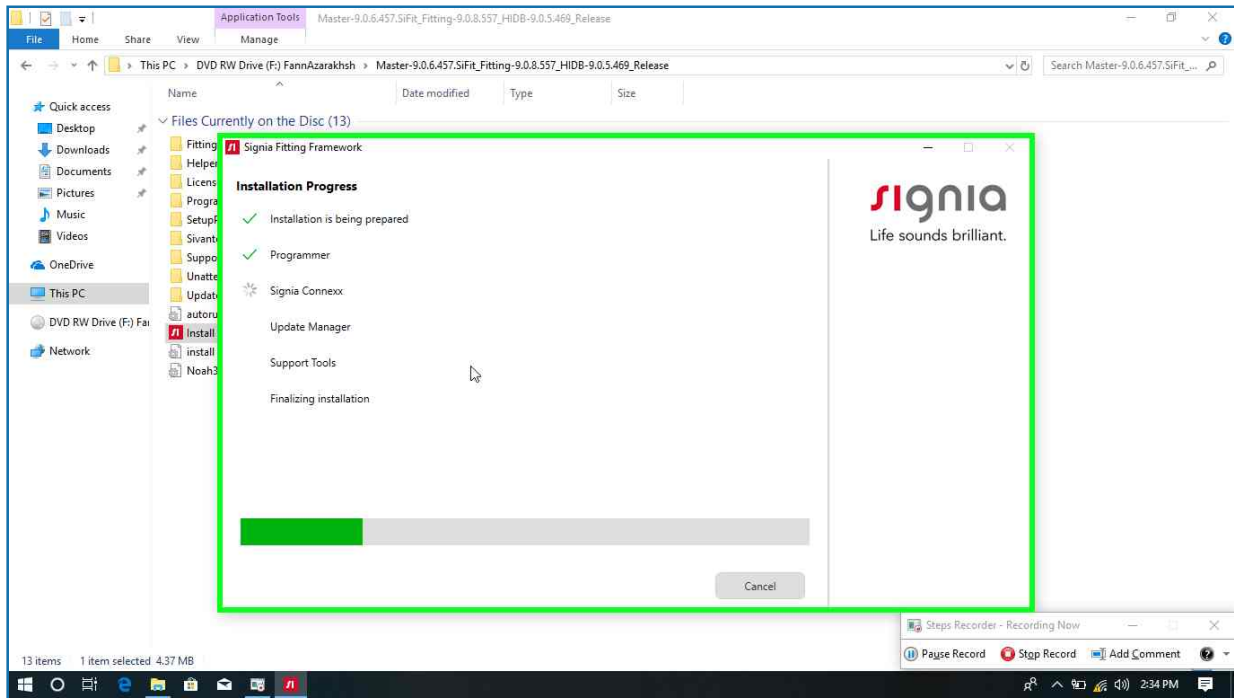
[Previous](#) [Next](#)

Step 15: (7/29/2019 2:34:31 PM) User left click on "SHS.SAT.Bootstrapper.CustomBA.Models.InstallationProgressModel (list item)" in "Sig"



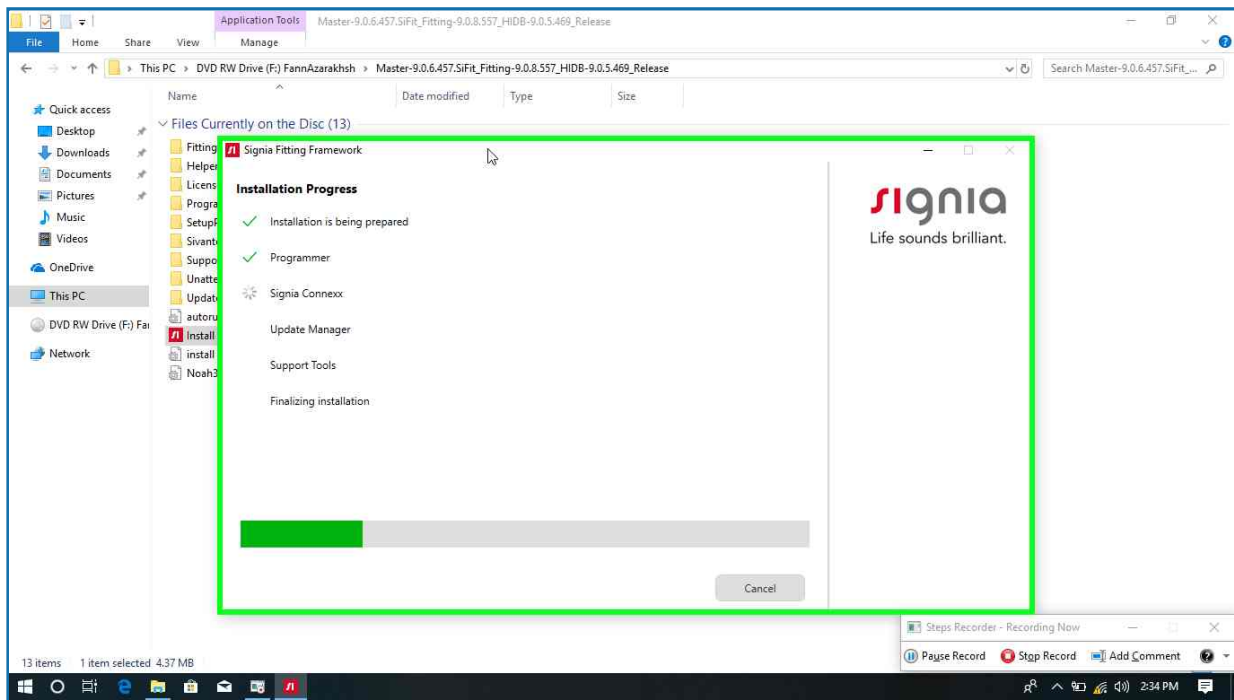
[Previous](#) [Next](#)

Step 16: (7/29/2019 2:34:35 PM) User left click on "SHS.SAT.Bootstrapper.CustomBA.Models.InstallationProgressModel (list item)" in "Sig"



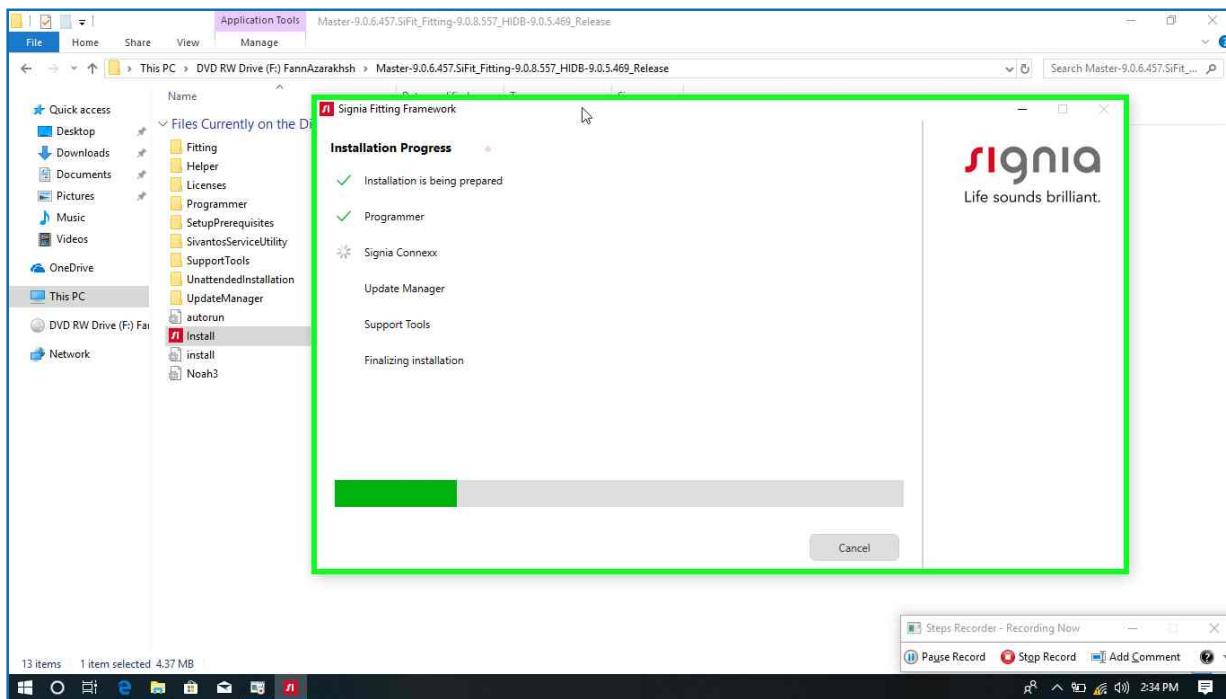
[Previous](#) [Next](#)

Step 17: (7/29/2019 2:34:37 PM) User mouse drag start on "Signia Fitting Framework (window)" in "Sig"



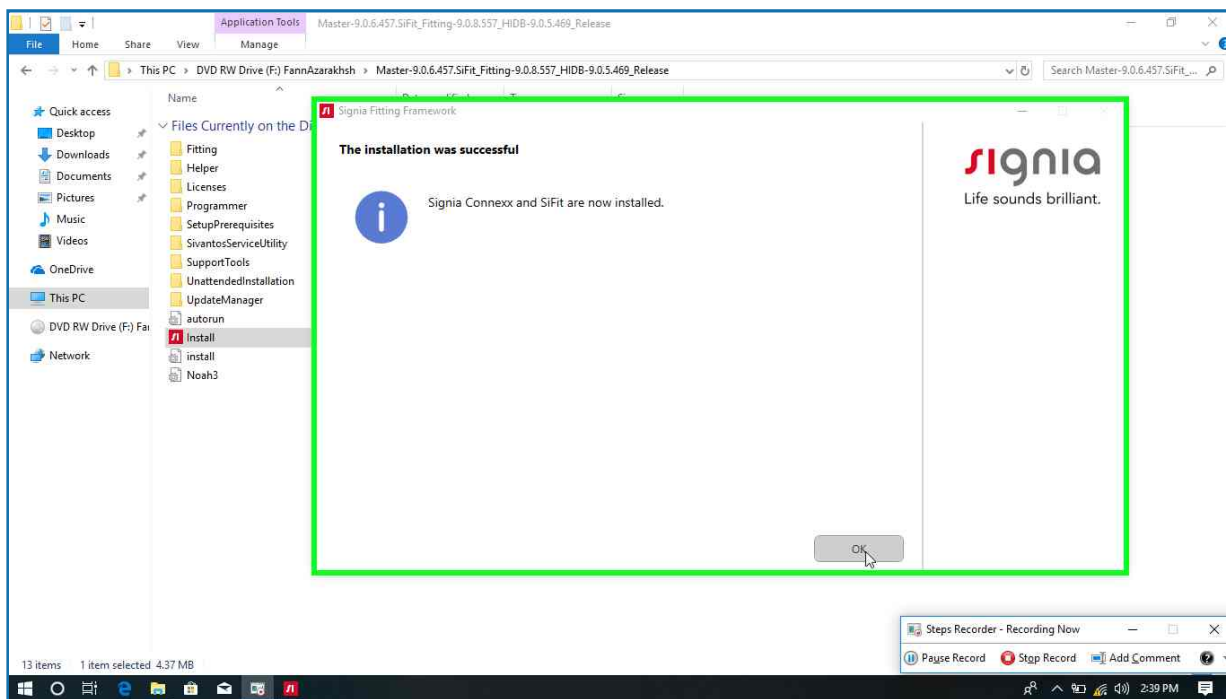
[Previous](#) [Next](#)

Step 18: (7/29/2019 2:34:38 PM) User mouse drag end on "Signia Fitting Framework (window)" in "Sig"



[Previous](#)

Step 19: (7/29/2019 2:39:56 PM) User left click on "OK (text)" in "Sig"



[Return to top of page...](#)